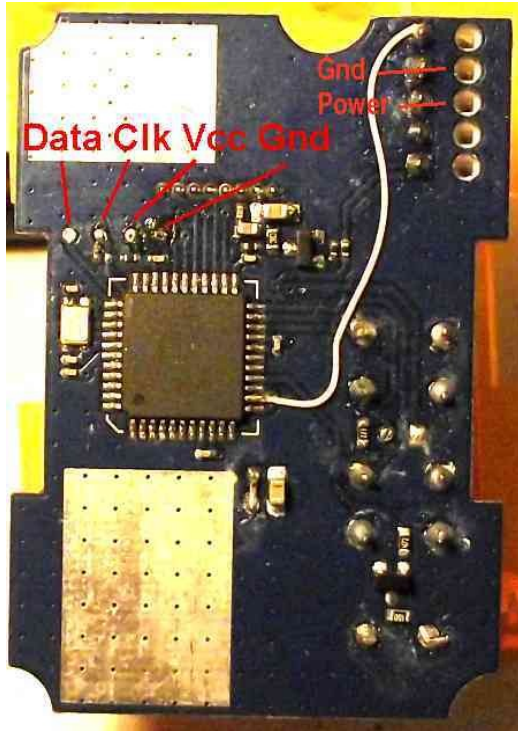


Details for updating an Orange DSM module to MULTI protocol.

Here are pictures of the two module types I have.

The blue one needs a wire added, and the programming pads need to be soldered.

The green one has the connection to the 5-pin module connector already present. The programming vias are on a 2mm pitch. I managed to bend the pins of a 0.1" header to fit so I don't need to solder to them.



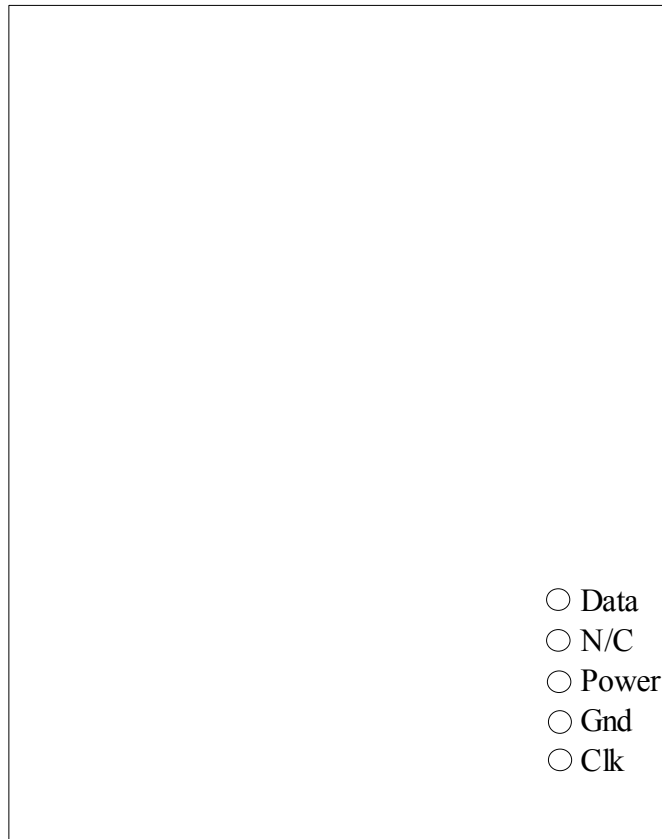
The wire added to the blue module is for telemetry output.

As these modules use an ATXMEGA32 processor, it is not possible to use a standard USBASP programmer. If you have a programmer that handles the PDI programming method, then use that. For those without, I have managed to put the code into the ersky9x for the 9XR-PRO, and for the 9Xtreme board. The 9XR-PRO is able to connect directly, but the 9Xtreme will need the addition of a transistor buffer/inverter to be able to drive the CLK signal properly.

WARNING: The Vcc voltage must not exceed 3.3V, and the Clk and Data signals are also limited to 3.3V.

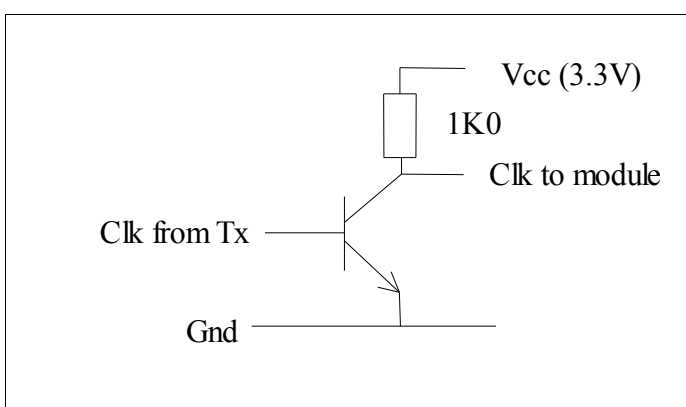
It is likely easiest to use a separate power source, this connects to the Power and Gnd connections of the module connector. I used a 4-cell, NiMh pack on the module connector. Doing this makes use of the module's own 3.3V regulator. It is possible to use the power from the pin in the Tx module bay.

Module Bay connections:



Note that the Power connection is battery voltage, do NOT use this directly to the 3.3V connection on the module.

If using the 9XR-PRO then the module bay pins connect directly (Data, Clk and Gnd). If using the 9Xtreme, Data and Gnd connect directly, but you need the following transistor circuit to buffer the Clk signal:



Note that there is a resistor internal to the 9Xtreme, so you don't need a resistor in the base of the transistor (any general purpose NPN type). The resistor actually stops the 9Xtreme from driving the signal fully, which is why the transistor is needed.

Updating.

In ersky9x, there is a new option in "maintenance mode" for updating XMEGA.

You will need to:

1. Flash the new firmware to the radio (9XR-PRO or 9Xtreme).
2. Copy the MultiOrange.bin file to the firmware directory on the SD card (then power the radio off).
3. Connect the 3 connections from the module bay pins to the places on the Orange module.
4. Start the radio in maintenance mode (hold the two horizontal trim switches APART while powering on).
5. Power the Orange module through the main 5-way module socket.
6. Choose "Update XMEGA" on the radio.
7. Select the MultiOrange.bin file (LONG MENU press).
8. Confirm the operation (LONG MENU press).

The module should then be flashed with the firmware, you will see a progress bar, and it takes only around a second. If it takes longer than this, then it probably didn't work (there is no error checking in at present).

Now disconnect the module and replace it in the module case.

You are now ready to plug the module into the radio and start using it.

On the protocol menu, set the protocol to MULTI, and the Type to either DSM2 or DSMX as required. Then set the option value to:

option = number of channels and frame rate:

- 0 : 4 channels @22ms
- 1 : 5 channels @22ms
- 2 : 6 channels @22ms
- 3 : 7 channels @22ms
- 4 : 4 channels @11ms
- 5 : 5 channels @11ms
- 6 : 6 channels @11ms
- 7 : 7 channels @11ms
- 8 : 8 channels @22ms
- 9 : 9 channels @22ms
- 10 : 10 channels @22ms
- 11 : 11 channels @22ms
- 12 : 12 channels @22ms

When you power on, the LED on the module should flash once per second while the splash screen is showing, then go on solid when the radio starts to send the MULTI protocol data. The MULTI code doesn't drive the beeper currently.

To bind, there is a BIND option on the menu, use this rather than the button on the module.

To enable telemetry, set the "Usr Proto" in the telemetry menu to DSMx.

24-Apr-2016