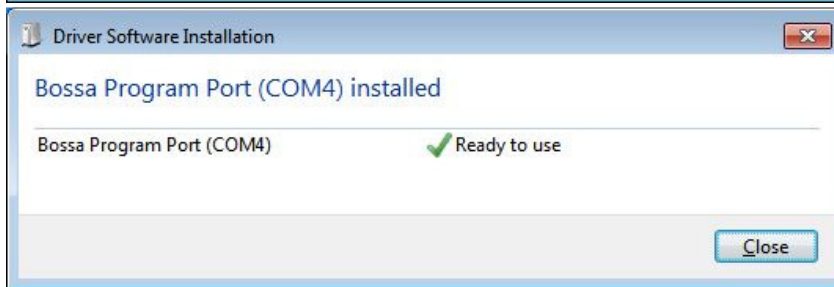
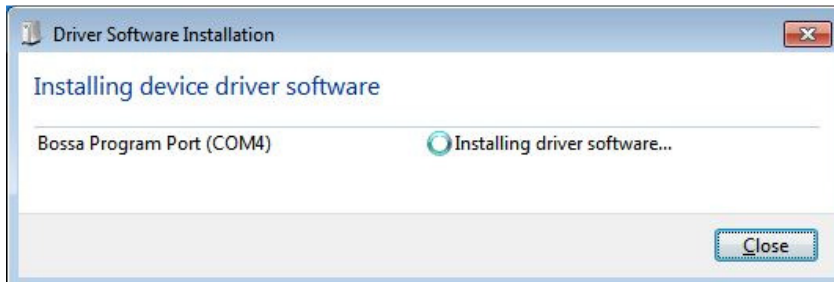


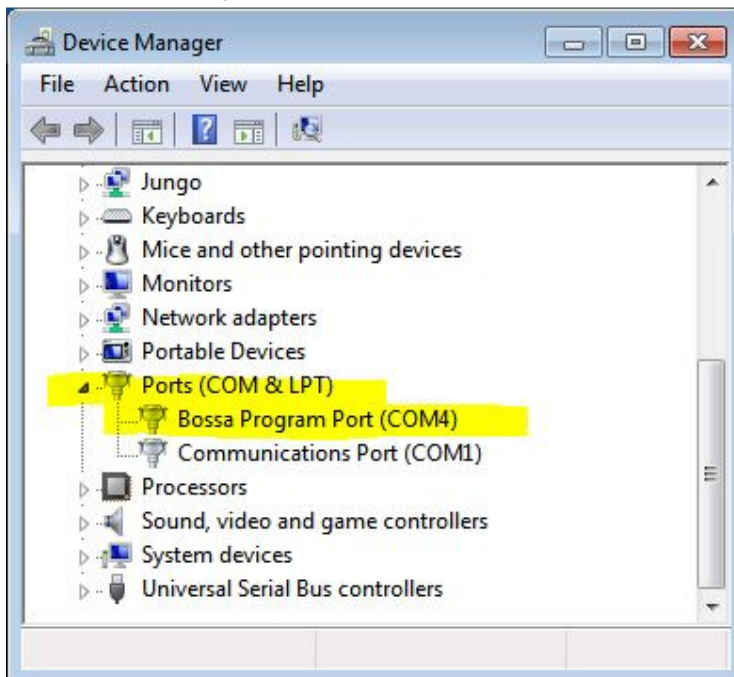
AR9x, ARUni Firmware flashing via SAM-BA tool

*CHIP_ERASE can be done short "CHIP_ERASE" pin to 3.3V and power up the board.

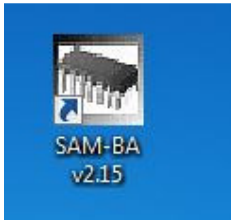
1. Ready board as powered off
2. Install SAM-BA program on your PC
(<https://www.rcgroups.com/forums/showatt.php?attachmentid=8531632&d=1450682596>)
3. Connect micro USB cable between PC and the board (Powered off)
4. Power up the board
5. Driver for "Bossa Program Port" is being installed



6. Confirm "Bossa Program Port" is installed on the Windows device manager.



7. Excute SAM-BA from PC

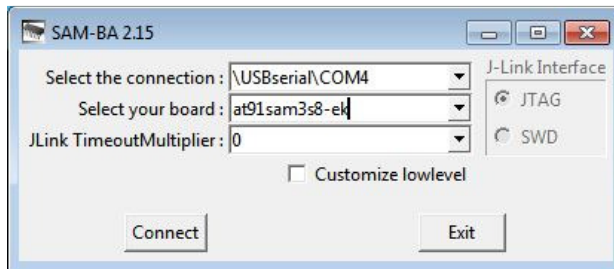


8. Select the connection & board type and Click "Connect"

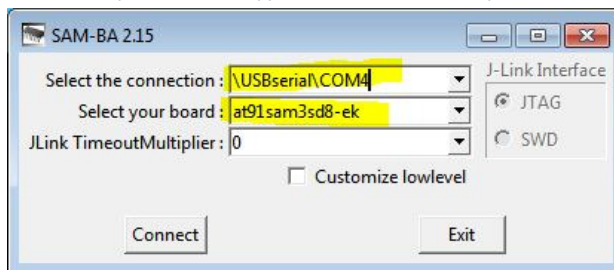
- a. Check your board type first refer

(https://static.rcgroups.net/forums/attachments/3/1/9/8/5/0/a8977372-192-a8828688-168-AR9x_lot_1.PNG)

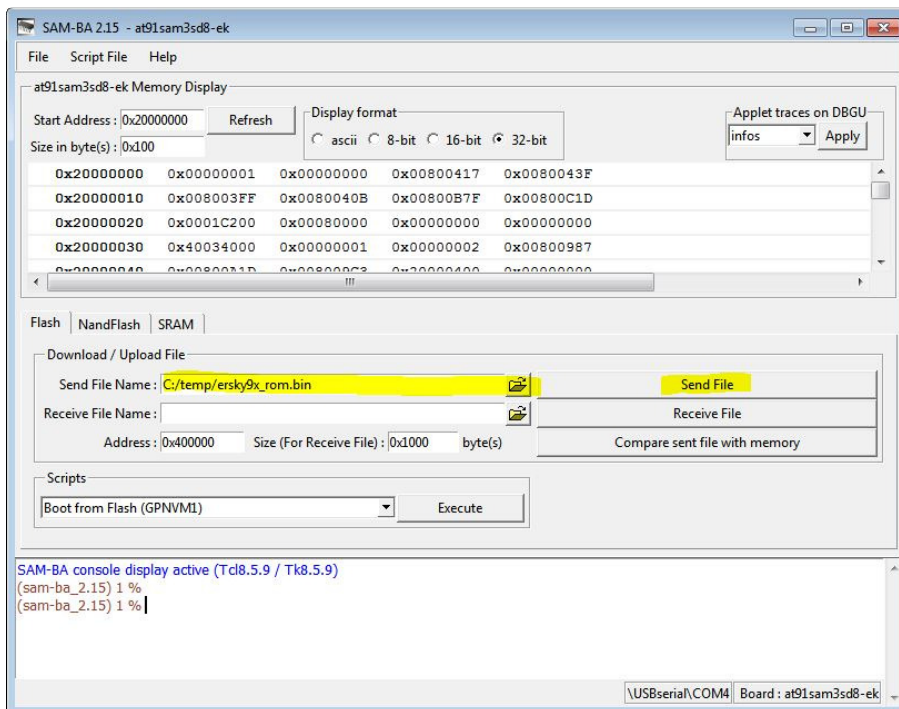
- b. If your board type is "3S8" select your board type as "at91sam3s8-ek"



- c. If your board type is "3SD8" select your board type as "at91sam3sd8-ek"

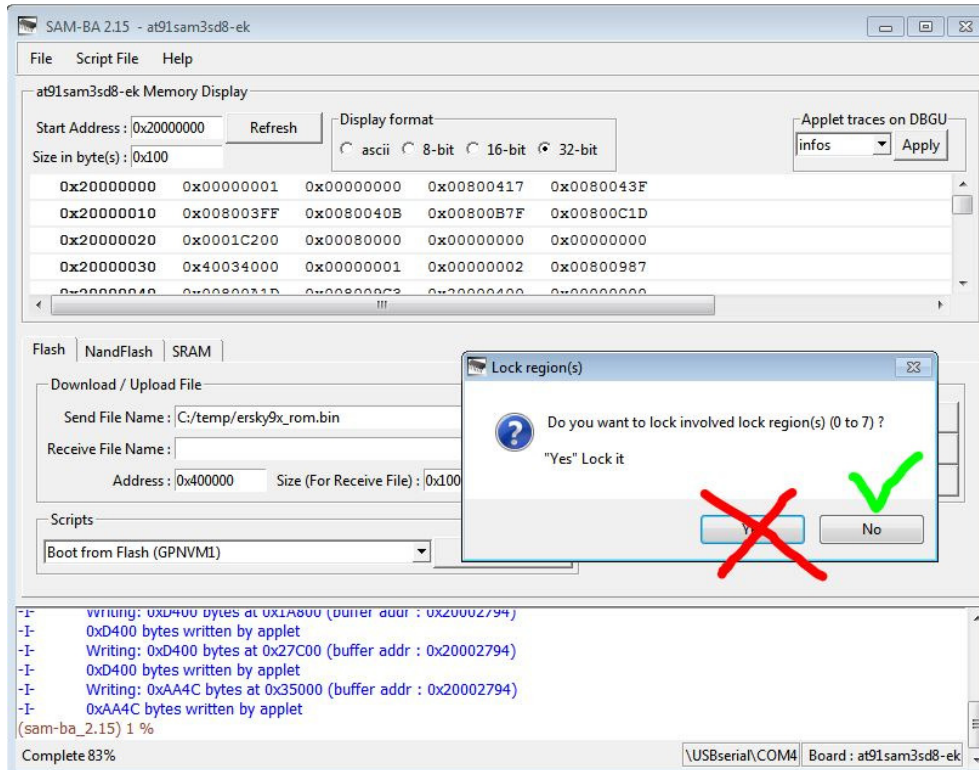


9. Choose the firmware you want to send to the board

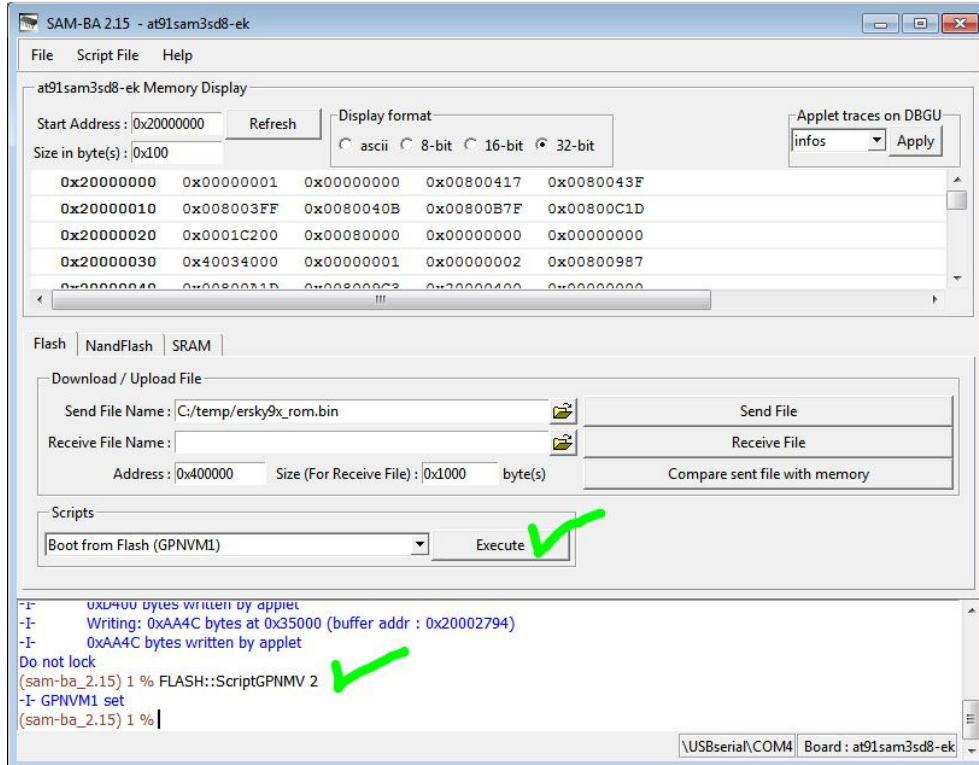


10. Click "Send File"

11. DO NOT LOCK IT, click on "NO"



12. Click Execute



13. Flash firmware Completed, remove usb cable from TX and power up. You must be able to see Bootup logo on the LCD screen.